

# Home Concert Xtreme for iOS User Guide

**Copyright** © 2002-2011 Zenph Sound Innovations, Inc. All rights reserved worldwide.

**Limit of Liability** This publication is provided “as is” without warranty of any kind. Zenph Sound Innovations, Inc. does not warrant, guarantee, or make any express or implied representations regarding the use, or the results of the use, of this publication in terms of accuracy, reliability, or otherwise. Zenph Sound Innovations, Inc. shall have neither liability nor responsibility to any person or entity with respect to any loss or damages arising from the information contained in this publication. Zenph Sound Innovations, Inc. reserves the right to revise this publication at its discretion without notice.

**Trademarks** Windows is a registered trademark of Microsoft Corporation in the United States and other countries. Mac, Mac OS, and iPad are trademarks of Apple Inc., registered in the U.S. and other countries. “Yamaha” and “Disklavier” are registered trademarks of Yamaha Corporation. Zenph is a registered trademark and the Zenph logo and Home Concert Xtreme are trademarks of Zenph Sound Innovations in the United States and other countries.

- Quick Start ..... 5
- Connecting Your Keyboard..... 9
  - What Kind of Keyboard Do I Need? .....9
  - Easy Setup.....9
  - MIDI Setup Menu ..... 10
  - Test Your Setup ..... 12
- Loading New MIDI Files ..... 13
  - Single Files..... 13
  - Folder Hierarchy with DiskAid™ ..... 14
- Playback Controls ..... 15
  - Rewind/Fast Forward..... 15
  - Play and Follow/Stop ..... 15
  - Play File ..... 15
  - Play Performance ..... 15
  - Preview..... 15
  - Loop Mode..... 16
  - Metronome ..... 16
  - Mute Accompaniment ..... 16
- Turning Pages ..... 16
- Home Concert Xtreme’s Play-Along Modes ..... 17
  - Learn Mode..... 17
  - Jam Mode ..... 17

Perform Mode.....	17
Custom Settings for Play-Along .....	18
Customizing View and Playback.....	19
Tempo and Volume Sliders.....	19
Mixer.....	19
Keyboard and Velocity Meter Display .....	19
Simple Markers .....	20
General Markers.....	21
Upper-/Lower-Staff Track Markers.....	22
Between-Staff Track Markers.....	22
Set this Measure as “Measure 1” .....	22
Region Markers .....	23
Upper-/Lower-Staff Track Markers.....	23
Between-Staff Track Markers.....	24
Summary of iPad Gesture Functions .....	25
Troubleshooting.....	27
No Sound During Playback.....	27
Trouble with MIDI.....	27

## Please Register Your Software

Please take a moment to register your copy of Home Concert Xtreme for iPad. This will help us keep you informed of important updates and new version releases. Your registration will also allow you to participate in our discussion forums, where you can learn tips from us as well as other users. Please use this link to create an account:

<https://www.zenph.com/customer/account/login/>

Thanks for joining our musical family!

## About Home Concert Xtreme for iOS

Home Concert Xtreme is a learning, practice, and performance environment for music students, hobbyists, and professionals. Home Concert Xtreme can be used as a music player and notation viewer for Standard MIDI files (.mid). When combined with a MIDI instrument, such as a keyboard or digital piano, it also “listens” as you play, interacting in real time by matching your tempo and dynamics, and by turning your pages as the music plays.

As you dig deeper into the features, you’ll discover a wide range of learning and practice tools to keep you motivated and efficient, plus tons of custom settings to make the music look and sound just the way you want it.

## Quick Start

As soon as Home Concert Xtreme for iOS has been loaded onto your iPad, you are ready to try out some of its features.

Open Home Concert Xtreme by tapping on its icon in one of your home pages



Check your MIDI settings:

Tap the gear icon and make sure MIDI Output is set to “Internal GM Synth.”

Tap the Folder icon and select a title.

Home Concert Xtreme comes preloaded with dozens of pieces in a variety of styles and levels. (You may also add your own MIDI files later)

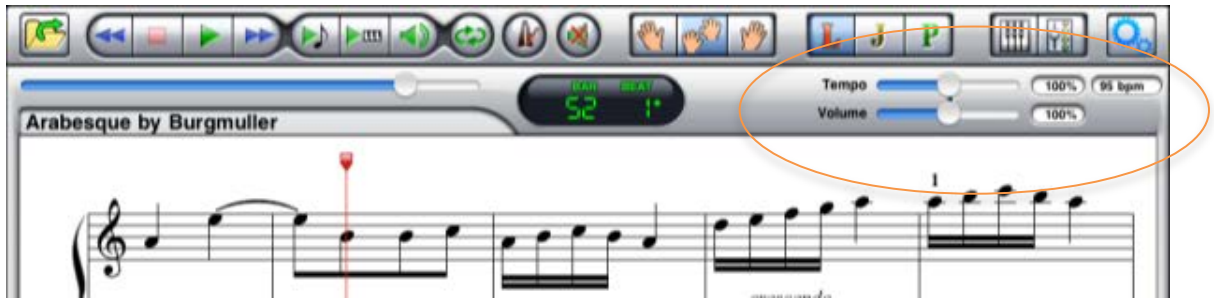


First, you'll want to get familiar with the basic MIDI playback features.

Tap the Play File icon



You should hear the music as you watch it scroll by on the screen. Notice that you can modify tempo and volume with simple sliders on the upper right side of the screen:



If you would like to play along with the MIDI file, select the "J" button for "Jam Mode." Then tap the Play and Follow icon. This feature is described more fully below in the Play-Along Mode section.

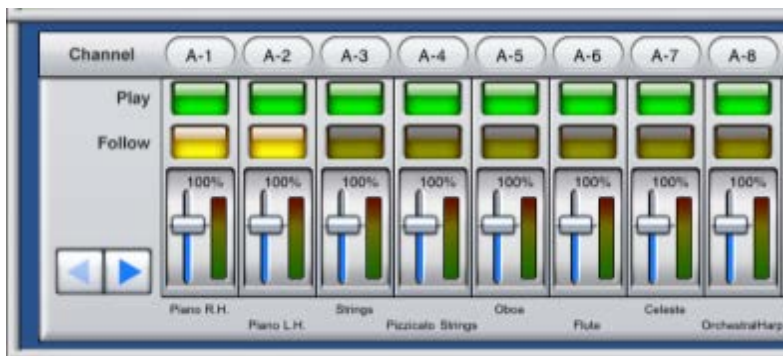


You will hear all the accompaniment parts being played as you play the piano parts. If you'd like to practice with only one hand, Home Concert Xtreme will fill in the other part! Simply choose the hand you'd like to play yourself from the hand icons.

You may also tap the MIXER icon:



to mute or change volume for any part:



Now, try out some of the custom [view settings](#).

Home Concert Xtreme takes advantage of the iPad's pinch-to-zoom feature. "Pinching" or "spreading" with two fingers on the screen will toggle among three notation sizes:

Small:



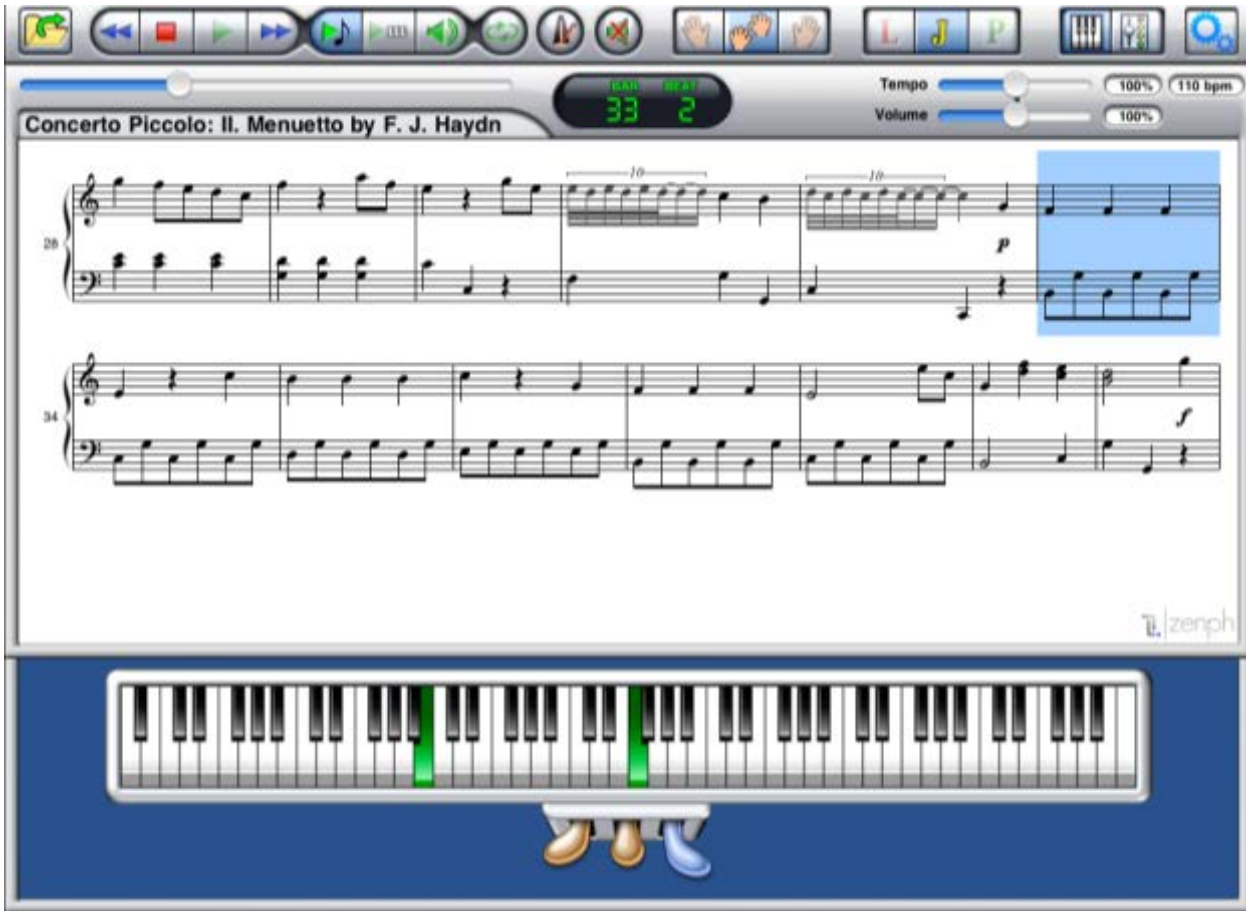
Medium:



Large:



Tap  to see the onscreen keyboard and have keys illuminate as the music plays.



## Connecting Your Keyboard

Home Concert Xtreme shines at its best when connected with a MIDI keyboard. With this connection, your music score becomes a fluid, interactive environment to make your practicing more efficient, your performance more engaging, and your teaching more effective.

## What Kind of Keyboard Do I Need?

Most keyboards, digital pianos, or MIDI-enabled acoustic pianos can work with Home Concert Xtreme for iPad. If you plan to use music with accompaniment, we suggest that you use a keyboard with at least the minimum General MIDI (GM) soundset. A direct USB connection is also a convenient feature to consider, as long as the built in interface is “class compliant.”\* As with all MIDI playback, the sound is only as good as the device on which it is played, so be sure you are happy with your keyboard’s sound samples before you purchase.

## Easy Setup

Connecting your iPad to a MIDI keyboard is quick and easy.

If you have a class-compliant\* MIDI keyboard or MIDI interface, all you need is the Apple Camera Connector (available from any authorized Apple dealer) to use Home Concert Xtreme for iOS.

If your MIDI Interface isn’t class compliant, we recommend the iConnectivity MIDI Interface for iOS.  
[www.icconnectivity.com](http://www.icconnectivity.com)

---

\*most MIDI Interfaces qualify as “class compliant.” This simply means that they can work in the iOS operating system without installing additional software or drivers.

## MIDI Setup Menu

After you have attached your MIDI keyboard or interface, tap the [icon] button to access the MIDI Setup menu. Choose the appropriate Input and Output devices from the list:



## Input

Select your keyboard or other input device you will need to select your equipment in the proper fields.

## Output A/B

Select the device(s) you would like to use for playback sounds.

Note that Home Concert Xtreme for iOS allows you to have two separate output devices. This may be useful if you have more than one MIDI tone generator and want to choose separate devices for specific MIDI channels.

You may assign any channel to either output by long-pressing the channel's oval-shaped button in the Mixer View.

If your keyboard doesn't include the full General MIDI sound set, you may also leave Output set to Internal GM Synth for MIDI playback.

If you are using a controller-only keyboard (one which doesn't produce sounds of its own), you may select "Echo MIDI Input" then choose an output channel, to be able to hear the solo part as you play it.

Tip: most users will choose "First Solo Track's Channel."



## Test Your Setup

To test if you have successfully connected your keyboard to your iPad, tap the keyboard icon and play a few “keys” onscreen. The corresponding sound should come out of the device you have selected.

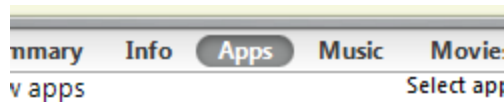
Now, play keys and/or pedals on your MIDI keyboard. You should see your playing on the onscreen keyboard.



## Loading New MIDI Files

### Single Files

1. Connect your iPad to your computer and launch iTunes
2. Select your iPad from the **DEVICES** tab in the navigation bar on the left
3. Select **Apps** from the Menu Bar at the top of the iTunes display area as shown:



4. Scroll down the display area until you see **File Sharing** with the note "The apps listed below can transfer documents between your iPad and this computer"
5. You will see **Home Concert** in the list of Apps under **File Sharing**
6. Select **Home Concert** and then click the **Add** button on the right under **Home Concert Documents** to locate MIDI files on your computer and transfer them to your iPad.

You may also retrieve MIDI files attached to emails on your iPad.

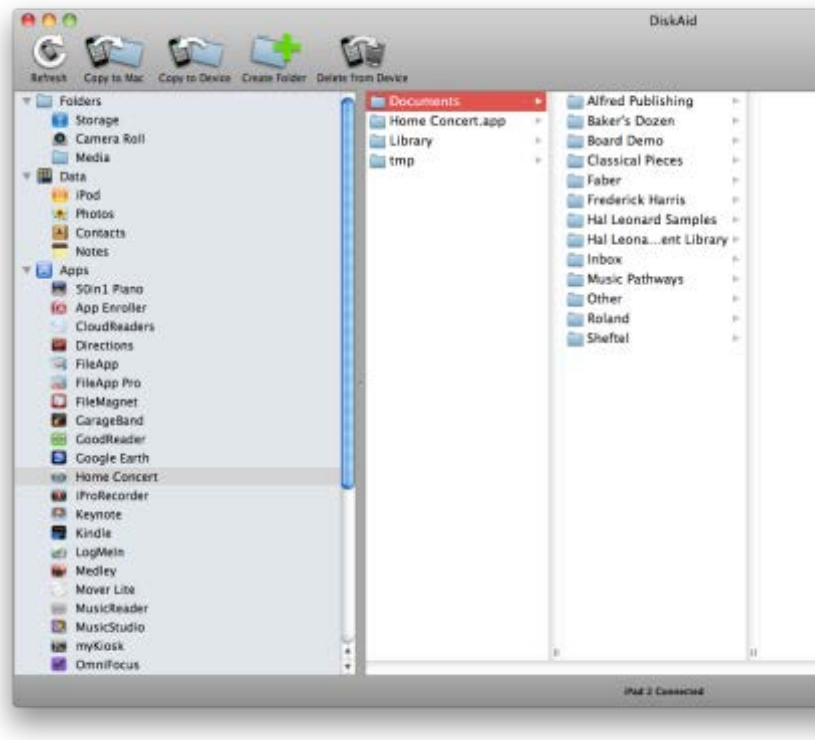
1. Open a message with a MIDI file attached
2. Long-press the attached file's icon
3. Select "Open in Home Concert"
4. Once you have opened a file from an email attachment, that file will reside in a folder called "InBox Copies" with other files in your Documents list.

## Folder Hierarchy with DiskAid™

Using the DiskAid™ utility, you can easily create and organize files and folders from your desktop computer. First, download the installer from [www.digidna.net](http://www.digidna.net). Note that this is an application for your computer, not your iPad.

When you have the application installed, follow these steps:

1. Connect your iPad to your computer
2. Open DiskAid
3. Select Home Concert from the menu on the left side of the window
4. Click “Copy to Device” from the bar at the top of the window. From here, you’ll be able to select files or folders to copy onto your iPad.
5. When you have made your selection, click “Save”
6. You may also create new folders using the “Create Folder” icon at the top, or drag and drop to rearrange folders and files in the same way you would on your computer’s Finder (Mac) or Windows Browser (PC)



## Playback Controls

Rewind/Fast Forward



Tap these buttons to advance the cursor backwards or forwards. Double-Tap to advance to the beginning or end of the score.

Play and Follow/Stop



Use these buttons to start or stop playback in the selected play-along mode. (see Play-Along Modes below)

Play File



Listen to the complete file, including the parts displayed on the score.

Play Performance



Tap once to Listen to your most recent performance.

Preview

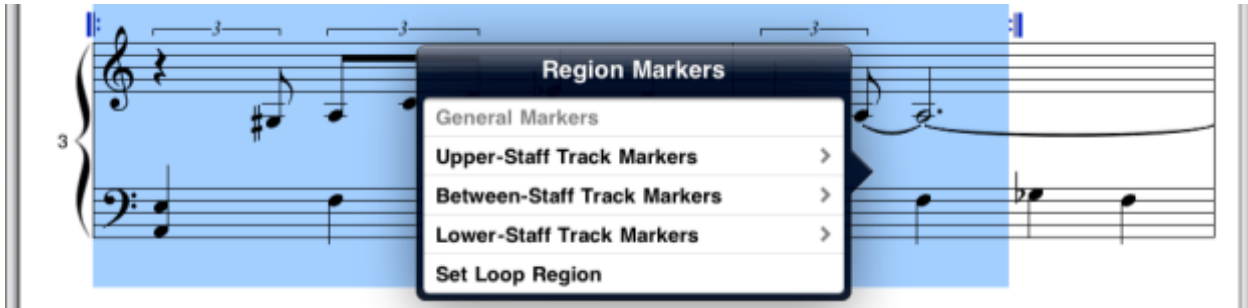


Play and hold to audition the file at the location of the cursor.

## Loop Mode



Home Concert Xtreme can help you practice only one section of music at a time. To activate the Loop Mode, select a range of notes or measures, then tap the loop icon. You will see blue repeat signs surrounding the area you have selected (these will be grey when Loop Mode is inactive)



## Metronome



To use the metronome, simply tap the metronome icon. You will then hear its tick during Play File or Play and Follow.

## Mute Accompaniment



You may mute all the accompaniment parts at once with this icon. This may also include the left or right hand playback depending on the left or right hand follow selection.

## Turning Pages

Home Concert Xtreme for iOS turns pages automatically as you play or listen to the file. You may also turn pages manually using the “swipe” gesture.

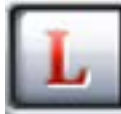
If you wish to see the next or previous half-page without engaging playback, double-tap on the border to the left or right of the score.

## Home Concert Xtreme's Play-Along Modes

Home Concert Xtreme is most known for its unique, patented method of following the player at the keyboard. By using each of the three play-along modes, your score and accompaniments can follow you as much or a little as you like. You may long-press any play-along icon for more options. Note that not all options are available in every mode:



### Learn Mode



Learn Mode challenges the user to play every single note on the score. If you miss a note, the music will pause until you correct your mistake. If you are viewing the onscreen keyboard, you will see the next correct note or notes as red keys on the keyboard until you play them.

### Jam Mode



Jam Mode provides a fixed-tempo, steady playback of the accompaniment tracks. Although certain markers and user settings may be observed, the keyboard input does not affect playback tempo or dynamics.

### Perform Mode



Perform Mode provides the ultimate interactive playback experience. As you play, the accompaniment and the score can follow your tempo and dynamics as you play.

## Custom Settings for Play-Along

In each of the modes, long-press the icon to choose among these custom settings (not all settings are available in every mode):

**Tap Count-off Before Starting** This feature allows you to establish a tempo and will automatically start Play & Follow at that tempo. Cue up the location in the piece where you want to start. Now tap the sustain pedal fully for either four beats or one full measure of beats to set your tempo. Play and Follow will begin. If you don't have a sustain pedal, you can still adjust the tempo with the Tempo slider.

**Wait for First Note** Pause playback until you play the first note in the score.

**Start Automatically** Will begin playback when you start to play.

**Stop Automatically** Will stop playback when you stop playing.

**Jumping** Choose "A Few Beats", "Anywhere in the Piece", or "Off" to determine whether Home Concert Xtreme should "find" you if you skip to another part of the score.

**Observe Wait & Special Signal Markers** Determines whether these markers are active during playback.

**Volume Tracking** Set Home Concert Xtreme to track and follow your dynamics.

**Solo Track(s)** An alternate way to choose Left Hand or Right Hand following.

## Customizing View and Playback

Any MIDI file you open in Home Concert Xtreme can be customized with your text notes, finger numbers, dynamics, and more.

### Tempo and Volume Sliders

Global tempo and volume settings are simple to change with the sliders on the right side of the screen



### Mixer

View the onscreen mixer with the icon in the upper right corner of the screen.

Use the mixer to mute or adjust the volume of individual parts of the orchestration. Select any track's "Follow" button, to view that track in the score.

You may select any one or two tracks in the file to view as upper and lower staves in the score view.

Long-press on any channel button to alter that channel's designated output.

### Keyboard and Velocity Meter Display

To view or hide the onscreen keyboard, simply press the keyboard icon at the top of the screen.



You may also choose whether the keyboard includes velocity meters and pedals with a long-press on the solid-colored area surrounding the keyboard.



## Simple Markers

Home Concert Xtreme provides you with an entire toolbox of “markers” to customize your viewing and playing experience. Simple Markers apply to a specific note or chord (notes or elements that fall on the same beat of music).

To select a single note or chord, long-press that spot on the score to access the Simple Markers menu.

Select “Simple Markers” to view the categories and markers, defined below.



## General Markers

### Wait for Attack



Home Concert Extreme will pause the playback of the accompaniment tracks until you play the highlighted notes. If the marker is attached to a chord, only one of the notes of the chord needs to be accurately played to activate the signal.

### Wait for Special Signal



Home Concert Extreme will pause the playback of the accompaniment tracks until you tap the center (sostenuto) pedal.

### Restore Tempo



Home Concert will change the playback tempo to the default tempo of the MIDI file.

NOTE: Whenever Home Concert reverts to the default tempo, it adjusts the tempo of the MIDI file according to any tempo percentage override that you may have designated with the on-screen tempo slider.

## Rehearsal Point

Use rehearsal points (designated with successive letters of the alphabet) to mark common starting points for rehearsal.

## Upper-/Lower-Staff Track Markers

### Dynamics

Add standard dynamic markings to the upper or lower staff at the selected point in the score.

### Fingering

Add finger numbers to the note or chord in the upper or lower staff. Repeating this action will stack numbers for each note represented.

### Articulation

Add articulations to specific notes in the upper or lower staff.

### Duration

Occasionally, notes in the MIDI file do not display with the appropriate duration. Use this feature to adjust individual notes. This adjustment will not affect playback.

## Between-Staff Track Markers

Text Comments and Dynamics are also available as “Between-Staff Markers.” These markers will appear in the middle of the Grand Staff.

## Set this Measure as “Measure 1”

Some MIDI files are created with extra time in the beginning. Use this feature to adjust the measure numbers to match your printed score.

## Region Markers



Region Markers apply to a range of notes or measures. To define a region,

1. Tap one end of the area you wish to define
2. Long-press the other end of the area you wish to define
3. Select “Extend Selection” to highlight the enclosed region

Once a region is defined, long-press within the highlighted area and select “Region Markers.”

Your choices will be similar as with Simple Markers, but with different sub-menus:

### Upper-/Lower-Staff Track Markers

#### Don't Follow Track

Assigns a section of the music to play without interaction with the keyboard. This feature is used, for example, during trills or other ornaments which may be played with less precise timing. These notes are displayed in dark grey.

#### Treble/Bass

Changes the clef sign of a region.

#### Octave

Adjust the octave up or down to reduce ledger lines.

## Dynamics

Region dynamics apply to a specific range of music (cresc., dim., or their symbols, for example).

## Quantization

Adjusts the appearance of rhythms to a defined unit, such as eighth or sixteenth notes. Quantization only affects the appearance of the score, but does not affect the playback of the file. Can be applied to one or both tracks.

## Between-Staff Track Markers

“Don’t Follow Either Track” and “Dynamics” are also available as regional “Between-Staff Markers.” These markers will appear in the middle of the Grand Staff.

## Summary of iPad Gesture Functions

The iPad employs a unique method of data input through the tap, double-tap, triple-tap, long-press, swipe, and pinch/spread gestures. Home Concert Xtreme takes advantage of these gestures in a variety of ways:

When using the program, note that you will get a variety of menu options if you “long-press” (press and hold) your finger in these locations:

- L, J, and P buttons (this works only if the button is already engaged)
- the white area that surrounds the notation display
- the blue area around the keyboard display
- the channel display in the mixer
- any note or rest in the piece
- any selected region of the piece
- any white area surrounding the notes to access further notation view settings, including
  - show performance-control markers
  - show loop region
  - show rehearsal points
  - show notation size
  - show keyboard
  - show mixer
- any mixer channel to change that channel’s designated output

To select a one-measure region, **double-tap** within the measure.

To select a line, **triple-tap** within any measure on the line.

To extend a selection to a particular note or rest, **long-press** the target note or rest and choose "Extend Section" from the popover menu.

If playback is not engaged, you can move from one page to the next by **swiping** the notation area either to the left or to the right.

To do a manual half-page turn, **double-tap** in the outside border of the notation area either to the left or the right of the notation display.

To change the notation size, **pinch** to make smaller; **spread** to make larger.

**Double-tap** on any slider (volume, tempo, or mixer slider) to return the slider to the neutral or original setting.

## Troubleshooting

### No Sound during Playback

First test your MIDI gear. Make sure that it is plugged in and works without interacting with the computer. You may find that there is switch somewhere which has not been turned on (MIDI keyboard, tone generator, amplifier, speaker, et cetera) or that there is a loose audio or MIDI cable. Also check to make sure that all volume controls are set to a usable level.

### Trouble with MIDI

If you are certain that your MIDI gear is working independently of your computer, check your [MIDI Setup Preferences](#) in Home Concert Xtreme. Be sure that you have selected the proper MIDI devices for **Input**, **Output A**, and **Output B**.

The iPad will only recognize class-compliant MIDI interfaces. If your device is not being recognized by the iPad, you may need to connect it using one of the following recommended interfaces:

- iConnectMIDI
- Yamaha I-MX1
- Mobilizer II from Line 6